

## Graph Tile

Numéro Du Style	<b>5T227</b>	
Collection	<b>Rapid Select</b>	
Type De Produit	<b>Dalles De Moquette</b>	
Construction	<b>Standard</b>	<b>Data + Performance</b>
Type De Fabrication	<b>ISO 2424</b>	<b>tufted 1/12"   47.2 per 10cm</b>
Construction	<b>ISO 2424</b>	<b>Tufté Structuré Bouclé à Motif</b>
Méthode De Coloration	<b>EN 994</b>	<b>100% Solution Teinte</b>
Dimensions Du Produit	<b>EN 994</b>	<b>50 cm x 50 cm   20 tiles (5 m²) per box</b>
Sous-couche Primaire	<b>ISO 2424</b>	<b>Pet Non-Woven</b>
Sous-couche Secondaire	<b>ISO 2424</b>	<b>Taskworx®   Bitume Modifié Par Polymère</b>
Fibre	<b>ISO 2424</b>	<b>Ecosolution Q® Polyamide 6</b>
Épaisseur Du Velours	<b>ISO 1765</b>	<b>6.0 mm</b>
Épaisseur Du Velours Fini	<b>ISO 1766</b>	<b>2.9 mm</b>
Poids Total	<b>ISO 8543</b>	<b>3985 g/m²</b>
Poids Tufté	<b>ISO 2424</b>	<b>616 g/m²</b>
Poids Du Velours Utile	<b>ISO 8543</b>	<b>287 g/m²</b>
Densité Du Velours	<b>ISO 8543</b>	<b>0.099 g/cm³</b>

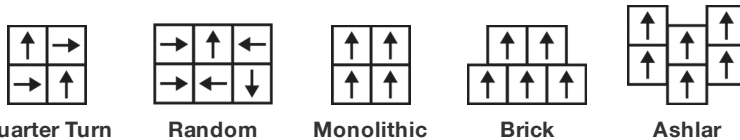


### Données

Points	<b>ISO 1763</b>	<b>211,000/m²   44.6 per 10cm</b>
Propension Electrostatique	<b>ISO 6356</b>	<b>≤ 2.0 kV (stroll test)</b>
Classification d'Utilisation	<b>EN 1307</b>	<b>33 Commercial Heavy</b>
Classification Luxe	<b>EN 1307</b>	<b>LC1</b>
Stabilité Dimensionnelle	<b>EN 986</b>	<b>≤ 0.2%</b>
Isolation Acoustique	<b>ISO 10140</b>	<b>25 dB</b>
Classification d'Absorption Sonore	<b>ISO 354/11654</b>	<b>0.15 αw   Class E</b>
Résistance Thermique m² K/w	<b>ISO 8302</b>	<b>0.065 m² K/W TOG 0.65</b>
Dry Slip Resistance	<b>ISO 13893</b>	<b>pass</b>
Résistance De La Couleur À La Lumière	<b>ISO 105-B02</b>	<b>&gt;6</b>
Inflammabilité	<b>EN 13501-1</b>	<b>Bfl-S1 (Adhered Testing)</b>
Chaise À Roulette	<b>EN 985</b>	<b>≥2.4 continuous use</b>

**Limitée Commerciale De 15 Ans** subject to installation in full accordance with manufacturer's instructions and a regular effective cleaning and maintenance programme.

### Méthodes d'Installation Conseillées



### Coordination Des Produits

Carpet Tile: **Graph Comfortworx® Tile, Roam Comfortworx® Tile, Nook Comfortworx® Tile, Roam Tile, Nook Tile**



**CE**  
07  
EN14041  
DOP 0338/CPR/0517/0917/BT

Manufactured by: SHAW EUROPE LTD. BLACKADDIE ROAD INDUSTRIAL ESTATE, SANQUIHAR, DG4 6DB, UK

E1  
HCHO

Bfl-s1

DS

Taskworx® | Bitume Modifié Par Polymère Dalles De Moquette for use as an indoor floor covering as specified by the manufacturer  
Notified Body Number 0338

Corporate Headquarters +1 800 257 7429 | +1 706 532 7984 | Atlanta +1 404 853 7429 | Bengaluru +91 80 6773 0202 | Beijing +86 10 6568 588 | Chicago +1 312 467 1331 | Dubai +971 4 584 6956 | Hong Kong +852 2623 0371 | Latin America (Miami) +1 305 827 5912 | London +44 207 961 4120 | Los Angeles +1 800 233 1614 | Melbourne +61 3 9939 8543 | Mexico City +55 5010 7600 | Mumbai +91 22 6284 5050 | Nantong +86 400 800 7429 | New York +1 212 953 7429 | Paris +33 (0) 1 81 22 44 39 | San Francisco +1 415 955 1920 | Santiago +562 2431 5000 x550 | São Paulo +55 11 3071 1702 | Shanghai +86 21 3338 4000 | Singapore +65 6733 1811 | Sydney +1 800 556 302

## Attributs + Certifications

Declaration of Performance	<b>0338/CPR/0517/0917/BT</b>
Certification Cradle to Cradle™ (C2C)	<b>Bronze Level (Version 3.1)</b>
Déclaration environnementale de produit (EPD)	<b>Certifié Par Un Organisme Tiers Conformément Aux Normes ISO14044, ISO 14025 &amp; EN15804</b>
Building Research Establishment (BRE) garantie environnementale	<b>A+ Health/A+ Retail 0.301/0.399 Ecopoints</b>
ISO 9001	<b>Take Back Policy Offered For All Taskworx Products</b>
pays d'origine	<b>Certifié</b>
BREEAM Contribution Credit	<b>United Kingdom</b>
	<b>Certificate of Approval</b>
	<b>Schools/Offices/Health/Industrial Shed</b>
	<b>Retail</b>

## contribution à la certification LEED

MR Credit: Building Product Disclosure and Optimisation Environmental Product Declarations - Option 1: Environmental Product Declaration (EPD)	<b>3rd Party Certified in Accordance with ISO14044, ISO14025 &amp; EN15804</b>
MR Credit: Building Product Disclosure and Optimisation Material Ingredients - Option 1: Material Ingredient Reporting	<b>C2C Bronze Level (Version 3.1)</b>
MR Credit: Building Product Disclosure and Optimisation Material Ingredients - Option 2: Material Ingredient Optimization	<b>3rd Party Certified in Accordance with ISO14044, ISO14025 &amp; EN15804</b>
"Crédit EQ : matériaux faibles émissions Option 1 : calculs par catégorie de produit"	<b>Certified</b>

## WELL V2 Contribution Credit

X08 Hazardous Material Reduction Part 1: Limit Hazardous Materials Optimization	<b>C2C Bronze Level (Version 3.1)</b>
X10 Volatile Compound Reduction Part 1 (A): Manage Volatile Organic Compounds (VOCs) Optimization	<b>C2C Bronze Level (Version 3.1)</b>
X10 Volatile Compound Reduction Part 2: Manage Semi-Volatile Organic Compounds (SVOCs) Optimization	<b>C2C Bronze Level (Version 3.1)</b>
X11 Long Term Emissions Control Part 2: Flooring Optimization	<b>M1&gt; Emissions Class For Building Material</b>
X13 Enhanced Material Precaution Part 1: Select Optimized Materials Optimization	<b>C2C Bronze Level (Version 3.1)</b>
X14 Material Transparency Part 1: Promote Ingredient Disclosure Optimization	<b>C2C Bronze Level (Version 3.1)</b>

## Air Quality

Indoor Air Comfort Gold	<b>Certified</b>
M1	<b>Certified</b>

## Memberships

WGBC Framework	<b>WGBC Framework</b>
UKGBC	<b>UKGBC</b>
Emirates Green Building Council	<b>Emirates Green Building Council</b>
Chemsec	<b>Chemsec</b>

## Informations Supplémentaires

\*\*Manufactured in ISO 9001 certified facility. Meets or exceeds all local and national regulations in country of manufacture.

[Installation Guidelines](#)

[Maintenance Guidelines](#)

[Limitée commerciale de 15 ans](#)

Specifications are subject to nominal manufacturing variance. Material supply and/or manufacturing processes may necessitate changes without notice.

This product is an exclusive design and may not be duplicated in any manner. Use of this design in the creation of another product design is also strictly prohibited.

Visit [shawcontract.com/testing](http://shawcontract.com/testing) for more information.

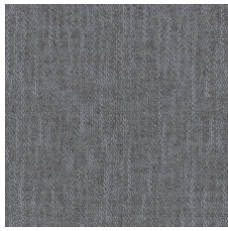


Corporate Headquarters +1 800 257 7429 | +1 706 532 7984 | Atlanta +1 404 853 7429 | Bengaluru +91 80 6773 0202 | Beijing +86 10 6568 588 | Chicago +1 312 467 1331 | Dubai +971 4 584 6956 | Hong Kong +852 2623 0371 | Latin America (Miami) +1 305 827 5912 | London +44 207 961 4120 | Los Angeles +1 800 233 1614 | Melbourne +61 3 9939 8543 | Mexico City +55 5010 7600 | Mumbai +91 22 6284 5050 | Nantong +86 400 800 7429 | New York +1 212 953 7429 | Paris +33 (0) 1 81 22 44 39 | San Francisco +1 415 955 1920 | Santiago +562 2431 5000 x 550 | São Paulo +55 11 3071 1702 | Shanghai +86 21 3338 4000 | Singapore +65 6733 1811 | Sydney +1 800 556 302

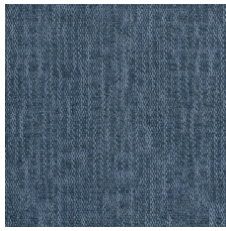
© 2022 Shaw Industries Group, Inc., a Berkshire Hathaway Company  
July 12, 2022

3 of 4

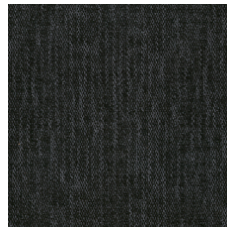
### Indice De Réflexion Lumineuse



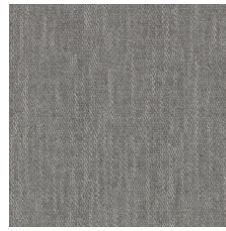
LRV 11.0  
Grey Mist 26481



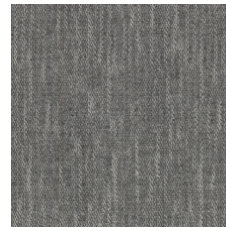
LRV 7.1  
Regent Blue 26485



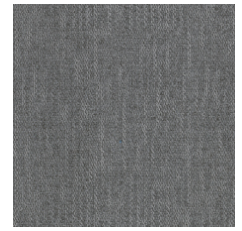
LRV 2.9  
Flint 26505



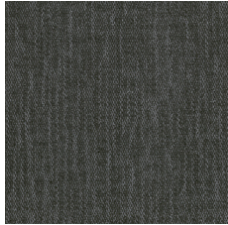
LRV 15.5  
Cobblestone 26515



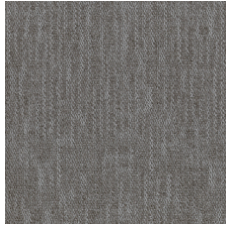
LRV 13.0  
Looking Glass 26530



LRV 11.3  
Sussex Grey 26535



LRV 5.5  
Shadow 26557



LRV 10.1  
Stone Gate 26760